



SASKATOON SASKATCHEWAN • MAY 4-5TH, 2024
TCU PLACE LOWER LEVEL • HOLIDAY INN DOWNTOWN
BROUGHT TO YOU BY THE RCIDPA
WWW.RIVERCITYIRISHDANCE.COM



HOTEL INFORMATION

HOLIDAY INN DOWNTOWN SASKATOON

\$179.99 1 King Bed with full or queen sleeper sofa

\$179.99 2 Queen Beds

\$184.99 2 Queen Beds Deluxe with Sleeper Chair

\$199.99 2 Queen Beds Superior Suite with Sleeper Sofa

\$199.99 2 Queen Beds Corner Suite with Sleeper Chair

Parking \$15 per night

[Holiday Inn Hotel Booking Link](#)



VENUE INFORMATION

TCU PLACE SASKATOON

Located in beautiful downtown Saskatoon, Saskatchewan, TCU Place is perfectly situated near many of our city's best attractions and services. An abundance of restaurants and retail stores are all within walking distance of the convention centre. The Saskatoon Airport and the University of Saskatchewan are both a 10 minute drive from TCU Place.

VENDORS

Vendor table rental is \$100.00 for the first table and \$50 for additional tables. Please contact rivercityfeis@gmail.com to book your space.

CONTACT US

CHAIRPERSON: Megan Martin

EMAIL: rivercityfeis@gmail.com

WEBSITE: www.rivercityirishdance.com

SOCIAL: [@feisontheflatlands](#)



SCHEDULE & FEES

SATURDAY
MAY 4, 2024

Preliminary Championship - A
Open Championship - A
Grades (First Feis to Prizewinner)
Grades & Champ Specials
Treble Jig Trophy - A
Reel Trophy - A
Music Competition
Lauren Spence Memorial Trophy
Tir Na Nog (registration to be done at the feis)

SUNDAY
MAY 5, 2024

Preliminary Championship - B
Open Championship - B
Treble Jig Trophy - B
Reel Trophy - B *NEW*
Adult Competitions
Sunday Treble Jig Trophy
Teams

Schedule is tentative and subject to change

DATES: MAY 4 & 5, 2024

ENTRIES: APP.FEISFWD.COM
Parents do their own entries and pay
Teachers do team entries for their school

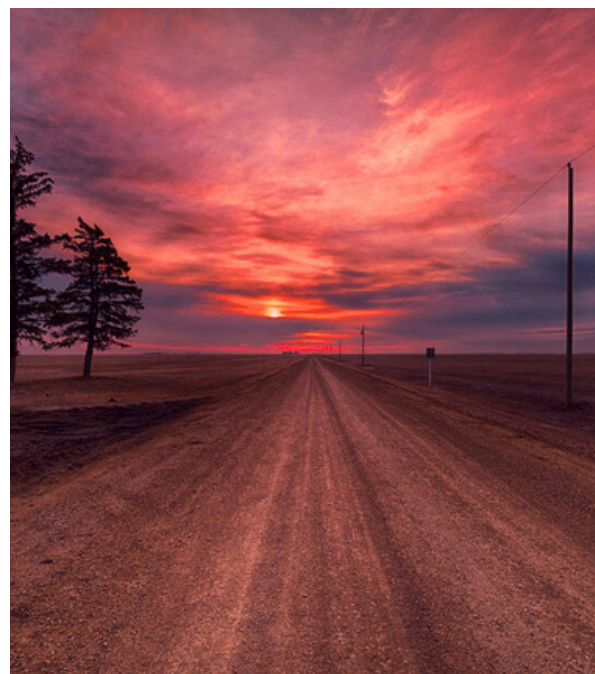
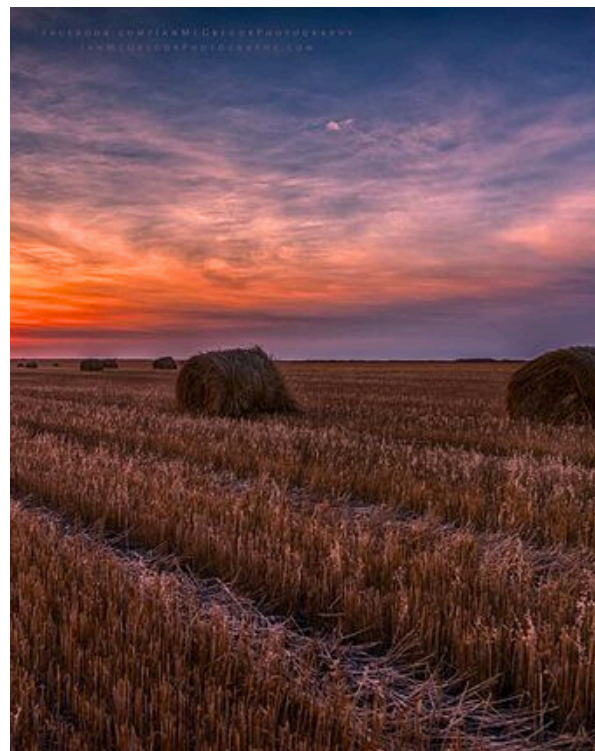
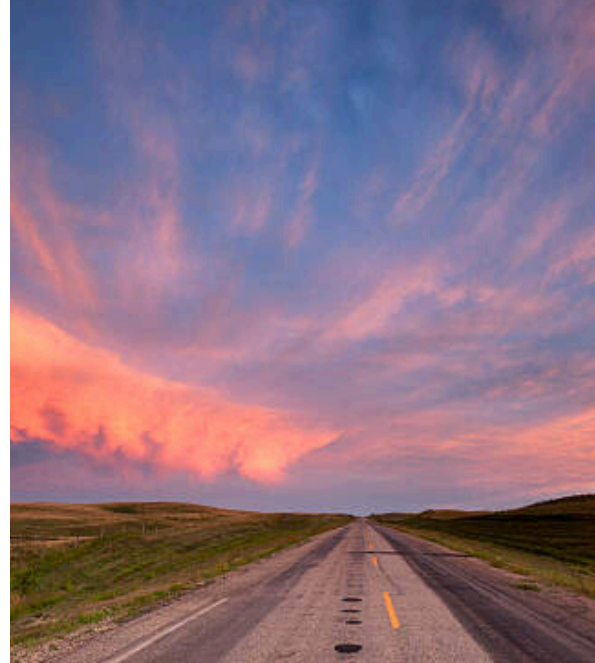
ENTRY DEADLINE: APRIL 22, 2024

FEES: **\$45.00** FAMILY ADMISSION | ONLINE RESULTS
\$150.00 FAMILY MAX INCLUDES:
\$7.00 GRADES SOLOS (BEG-PW)
\$20.00 1ST TROPHY PER DANCER
\$50.00 1ST CHAMPIONSHIP ENTRY PER DANCER
\$7.00 FIGURE DANCE PER TEAM MEMBER

EXCLUDED FROM FAMILY MAX:

\$50.00 2ND CHAMPIONSHIP ENTRY PER DANCER
\$20.00 2ND TROPHY PER DANCER
\$20.00 ALL SPECIALS
\$20.00 MUSIC COMPETITION

no refunds will be given





FEIS RULES

FEIS RULES

1. Competitions are open only to amateurs.
2. Only students of teachers registered in good standing with the WCIDTA., The IDTANA, and An Coimisiun le Rinci Gaelacha may compete.
3. Competitors ages will be determined as of January 1st of the current year.
4. Music shall be in accordance with regulation metronome speeds.
5. Categories:

First Feis: A dancer who has never previously competed in a registered competition.
Beginner: A dancer who has not qualified for Advanced Beginner in that particular dance.

Adv Beg: A dancer who has received a qualifying place in that particular dance in the Beginner level but has not yet qualified to move on to Novice in that particular dance.

Novice: A dancer who has received a qualifying place in that particular dance in the Advanced Beginner level but has not yet qualified to move on to Prizewinner for that particular dance.

Prizewinner: A dancer who has received a qualifying place in that particular dance in the Novice level but has not yet qualified to advance to Preliminary Championships.

First Feis Trophy: (Reel, 32 bars):
Open to dancers entered in their first feis. Dancers may not compete in any other Trophy competition.

Beginner/Advanced Beginner Trophy: (Reel, 32 bars)
Open to dancers who dance the majority of their dances in the Beginner or Advanced Beginner level in solos. A dancer must advance to Novice/Prizewinner Trophy if they receive two first place Trophies in this level, or if they advance in their solo levels.

Novice/Prizewinner Trophy: (Treble Jig, 32 bars, choice of 2 speeds)
Open to dancers who dance the majority of their dances in the Novice or Prizewinner level in solos. Also, open to dancers who have previously won two first place trophies in the Beginner/Advanced Beginner Trophy competitions. Dancers in ALL age groups will dance the Treble Jig.

Preliminary Championships: Open to dancers who have won two first place trophies in the Novice/Prizewinner Trophy competition, and who have not previously won two first place Preliminary Championships

Option B – one soft shoe round AND one hard shoe round AND one Non-Traditional Set Dance may be danced, in which case, the Feis Committee would offer this trophy dance instead of Preliminary solos. Solo marks will be given for each round, and an overall Championship prize will be awarded.

Open Championships: Open to dancers who have previously won two first place Preliminary Championships. **Option B.**

Specials: Specials do not qualify dancers to advance in grade levels. Please enter your dancer in specials based on the levels of their trophy dances. (ie. If they dance the Beginner/Advanced Trophy, then their specials are also in that level).

6. Dancers may only dance each dance once, the exception being dancers who are entered in First Feis competitions, who may also dance in Beginner.
7. In Figure dancing, 50% of a team may be moved to a higher age group to complete a figure, unless the Feis Committee has granted special permission. All Ceili dances must be performed in accordance with the Official Book "An Rinci Foirne".
8. A Competition may be cancelled or combined with a higher age group if there are less than five entries. competitions may also be split if needed.
9. Dancers should be in the hall 60 minutes prior to their competition start time.
10. All dancers must be in costume, compete with shoes and number to receive any award onstage.
11. Under no circumstances are the adjudicators or the musicians to be approached during the feis. The decision of the adjudicator is final.
12. No steel taps or bubble heels allowed. Shoes may be subject to inspection by adjudicators. Costumes must be in accordance with the IDTANA and An Coimisiun guidelines.
13. The River City Feis Committee, the WCIDTA, the River City School of Irish Dance, and the venue, are not responsible for personal injury, property loss or damage during an event.
14. Protest against breach of rules will be considered if made in writing and signed by the objector. The objection must also be accompanied with a \$25.00 fee and reach the River City Feis Committee before prizes are presented. If the complaint is justified, the \$25.00 fee will be refunded.
15. Competitors may only compete in the Trophy competition or a Championship, but not both. 'Specials' (competitions numbered in the 1000's) do not apply in this case.
16. No video equipment shall be allowed in the hall, including digital recording devices. This is a Commission rule.
17. The "River City Feis" Committee reserves the right to refuse any entry.
18. Dancers shall advance in each individual solo dance as follows:

Number of dancers in the comp	Placing that moves dancer up
<5	No placing advances
5 – 9	1 st place moves up
10 – 19	1 st , 2 nd , 3 rd move up
20 – 29	1 st , 2 nd , 3 rd , 4 th move up
30 or more	1 st , 2 nd , 3 rd , 4 th , 5 th move up

19. Dancers shall advance in Trophy comps and Championship as follows:
 - A dancer who wins two first place trophies in Beginner/Advanced Beginner Trophy advances to Novice/Prizewinner Trophy.
 - A dancer who advances to Novice or Prizewinner for the majority of their solo levels (hard shoes in particular) automatically advances to the Novice/Prizewinner Trophy.
 - A dancer who wins two first place trophies in Novice/Prizewinner Trophy advances to Preliminary Championships.
 - A dancer who wins two first place Preliminary Championships advances to Open Championships.
20. All Feis Committees must award a minimum of 30% of competitors in Preliminary and Open Championships.
21. Shiny plastic number cards should not be used.
22. All other Feis rules as per the CLRG, the IDTANA and the WCIDTA

SYLLABUS

RIVER CITY FEIS ON THE FLATLANDS SYLLABUS

**NOTE: Competitions may be split or combined at the discretion of the feis committee

SOLOS

First Feis	U6	U7	U8	U9	U10	U11	U12	12&O>		
Reel	3	5	7	9	11	13	15	17		
Light Jig	4	6	8	10	12	14	16	18		
Beginner	U6	U7	U8	U9	U10	U11	U12	12&O>		
Reel	107	114	121	128	135	142	149	156		
Light Jig	108	115	122	129	136	143	150	157		
Single Jig	109	116	123	130	137	144	151	158		
Slip Jig	110	117	124	131	138	145	152	159		
Treble Jig	111	118	125	132	139	146	153	160		
Hornpipe	112	119	126	133	140	147	154	161		
Trad. Set	113	120	127	134	141	148	155	162		
Adv Beginner		U7	U8	U9	U10	U11	U12	12&O>		
Reel		214	221	228	235	242	249	256		
Light Jig		215	222	229	236	243	250	257		
Single Jig		216	223	230	237	244	251	258		
Slip Jig		217	224	231	238	245	252	259		
Treble Jig		218	225	232	239	246	253	260		
Hornpipe		219	226	233	240	247	254	261		
Trad. Set		220	227	234	241	248	255	262		
Novice			U8	U9	U10	U11	U12	U13	U14	14&O>
Reel			321	328	335	342	349	356	363	370
Light Jig			322	329	336	343	350	357	364	371
Single Jig			323	330	337	344	351	358	365	372
Slip Jig			324	331	338	345	352	359	366	373
Treble Jig			325	332	339	346	353	360	367	374
Hornpipe			326	333	340	347	354	361	368	375
Trad. Set			327	334	341	348	355	362	369	376
Prizewinner			U8	U9	U10	U11	U12	U13	U14	14&O>
Reel			421	428	435	442	449	456	463	470
Light Jig			422	429	436	443	450	457	464	471
Single Jig			423	430	437	444	451	458	465	472
Slip Jig			424	431	438	445	452	459	466	473
Treble Jig			425	432	439	446	453	460	467	474
Hornpipe			426	433	440	447	454	461	468	475
Trad. Set			427	434	441	448	455	462	469	476
Adult	Beginner		Novice	Prizewinner						
Reel	740		747	754						
Light Jig	741		748	755						
Single Jig	742		749	756						
Slip Jig	743		750	757						
Treble Jig	744		751	758						
Hornpipe	745		752	759						
Trad. Set	746		753	760						
Music	U11	U15	15&O>							
Fiddle	A	B	C							
Voice	D	E	F							
Any Instrument	G	H	I							

TROPHY COMPETITIONS

First Feis Trophy	U6	U7	U8	U9	U10	U11	U12	12&O>					
Girls First Feis	900	901	902	903	904	905	906	907					
Boys First Feis	915	916	917	918	919	920	921	922					
TROPHY – 32 bars													
Beg & Adv Beg. Reel - A		931	932	933	934	935	936	937					
Beg & Adv Beg. Reel - B		9311	9322	9333	9344	9355	9366	9377					
Novice & Prizewinner													
Treble Jig - A				948	949	950	951	952	953	954			
Treble Jig - B				9488	9499	9500	9511	9522	9533	9544			
SPECIALS – 16 bars													
Light Jig – Beginner/Adv		1007			1010		1012	1013					
Reel – Novice/Prize.													
Novice & Prizewinner				1109		1111	1112	1113	1114				
Preliminary & Open					1120	1121	1122	1123	1124	1125	1126	1127	1128
Treble Reel Special – 16 bars													
Beginner & Adv. Beg				1209		1211		1213	1214				
Novice & Prizewinner				1229		1221		1223	1224				
Preliminary & Open					1230	1231	1232	1233	1234	1235	1236	1237	1238
Trad Set Special – whole thing													
Beginner & Adv. Beg				1309		1311		1313	1314				
Novice & Prizewinner				1329		1321		1323	1324				
Preliminary & Open					1330	1331	1332	1333	1334	1335	1336	1337	1338
Adult Specials													
Reel Special		All Levels											
Treble Reel Special		1129											
Trad Set Special		1239											
Lauren Spence Memorial Slip Jig Special													
										All Ages/All Levels			
1500													
CHAMPIONSHIPS – OPTION B													
Preliminary		U7	U8	U9	U10	U11	U12	U13	U14	U15	U16	16&O	
Prelim Champ - A		700	701	702	703	704	705	706	707	708	709	710	
Prelim Champ - B		7000	7011	7022	7033	7044	7055	7066	7077	7088	7099	7 100	
Open													
Open Champ - A			723	724	725	726	727	728	729	730	731	732	733
Open Champ - B			7233	7244	7255	7266	7277	7288	7299	7300	7311	7322	7333
TEAMS													
Beginner Figures		U7		U9		U11		U13		U16	16&O		
2 Hand		800		805		810		815		820	825		
3 Hand		801		806		811		816		821	826		
4 Hand		802		807		812		817		822	827		
6 Hand		803		808		813		818		823	828		
8 Hand		804		809		814		819		824	829		
Open Figures													
2 Hand		850		855		860		865		870	875	780	
3 Hand		851		856		861		866		871	876	781	
4 Hand		852		857		862		867		872	877	782	
6 Hand		853		858		863		868		873	878	783	
8 Hand		854		859		864		869		874	879	784	